

# R ROSEHILL CHRISTIANSCHOOL



*Our mission is to provide excellence in  
Christ-centered education as an extension of the Christian home.*

WE **R** ROSEHILL

 2023-2024



INSPIRE - EDUCATE - TRANSFORM



Dear Prospective Rosehill Christian School Family,

We are excited that God has led you to Rosehill Christian School! We sincerely believe that tomorrow's leaders deserve to be valued, welcomed, and known today. RCS offers students from Pre-school to 12th-grade opportunities to

grow intellectually, spiritually, emotionally, and physically. Our graduates go on to become productive, successful students at the finest colleges and universities in the nation and within their life endeavors. Our mission states the goal of RCS best:

Rosehill Christian School provides excellence in Christ-centered education as an extension of the Christian home.

Every day at RCS, there are opportunities to grow and learn as children blossom into the adults God designed them to be. With Christ at the center, we partner with parents to help students prepare for the challenges of this world so they fulfill their God-given purpose and reach their potential.

If you would like your child to be a part of this exciting journey, we would be delighted to talk with you to see if Rosehill Christian School is the best fit for your children and family.

We consider it a privilege to have the opportunity to minister to you and your family at Rosehill Christian School.

Sincerely,

Lauren Dyal  
Head of School



# BUILDING HIS KINGDOM



*Our goal is to keep Jesus Christ preeminent in everything we do and to build His Kingdom.*

## LOVING R SCHOOL

Our STAFF has weekly devotions, prayer groups, and spiritual trainings.

Our STUDENTS are loved through excellent programming, where Christ is a curriculum component each day.

## SERVING R COMMUNITY

Our student body represents over 100 local area churches.

We serve our diverse Christian community with educational and fellowship events.

We partner with local churches and like-minded organizations for Christian service and mission work.

## SECURING R FUTURE

RCS impacts the next generation for Jesus Christ by sharing the gospel, teaching Christian leadership, fostering relationships, and implementing capital campaign and donor gift programs.



# WHAT'S INSIDE

- 4 Lil' Eagles, PreK, & Elementary
- 5 Middle School
- 6 High School Profile
- 10 Athletics
- 12 Organizations & Clubs
- 14 Admissions Process
- 16 Tuition & Fees
- 18 Student Testimonial



-  [www.rosehillchristian.org](http://www.rosehillchristian.org)
-  Rosehill Christian School
-  @RosehillCS
-  @rosehillchristian



# PreK - 5

## LIL' EAGLES & PRE-SCHOOL

We believe a child's sense of self-worth is enhanced by learning that God has designed them as a fantastic one-of-a-kind! RCS preschoolers learn how to respect and enjoy each other's differences and to play with a spirit of sharing under the guidance of our supportive and nurturing teachers. As born-again Christians, our teachers delight in sharing the love of Christ with children.

Daily RCS pre-school activities include cutting and pasting, counting, numbers, reciting the alphabet, Bible reading, Scripture memory, music and movement, and playing to foster the joy of each new day!



## ELEMENTARY



**Our elementary provides excellence in education through academic rigor and spiritual growth.** While teaching our core academics, we weave the Bible and Christian principles into each subject.

Our guided reading approach challenges students in our **language arts program** while teaching the foundations for excellent writing. Our **math curriculum** promotes critical thinking and problem-solving skills while building excellent computational skills. In **social studies** and **science**, our students learn to see God at work through His creation and humanity through hands-on projects and activities as we learn to trust that God is in control of the past, present, and future.

***“But those who hope in the LORD will renew their strength. They will soar on wings like eagles; they will run and not grow weary, they will walk and not be faint.” - Isaiah 40:31 (NIV)***

6 - 8


# MIDDLE SCHOOL

**Excellence in academics at the middle school level prepares our students for the rigors of our college-preparatory high school.**

Our core academics include **math** in 6th grade, which lays the foundation for pre-algebra and algebra classes in the 7th and 8th grades. In science, students start with **Earth science** studying the natural world around them, followed by life science and integrated physics and chemistry in 8th grade. Novel-based units highlight our **English curriculum** covering themes, characterizations, literary elements, and plots. Students develop into meaningful writers through various lessons on grammatical concepts and writing modes such as literary analysis, poetry, short stories, persuasive essays, and compare/contrast essays. Our **social studies curriculum** studies world history, ancient civilizations, Texas history, and the middle ages. In addition, we cover the Old and New Testaments in survey classes.

With excellence in mind, we have chosen to supplement our academic core subjects in two areas. First, we promote Jesus Christ and Christian values through our academic core classes, chapel, field trips, and advisory classes. Secondly, we look to produce well-rounded students by offering numerous electives:

 FINE ARTS

 COMPUTER

 AGRICULTURE

 DEBATE

 STEM


*"We were looking for a school for our boys where they could connect and flourish both academically and spiritually. It was easy to see the perspective of other schools from their facilities & aesthetics, but what we noticed about Rosehill the minute we walked in the door was a sense of community that felt like family. To find a place where your child is known and loved is a breath of fresh air, and made our decision to choose Rosehill easy".*

*– Karen Thomas*

# HIGH SCHOOL PROFILE



## ABOUT RCS

Situated on a 29-acre campus, Rosehill Christian School was founded in 1990 and established as a college preparatory institution. Our faculty to student ratio of 15:1 enables a small class setting that provides an environment for in-depth instruction and close relationships with the teachers. The school strives to inspire, educate, and transform each student through rigorous academic standards, Biblical instruction, weekly chapel services, and a focus on serving others. Each student serves at least 100 hours of Community Service before graduating. Our mission is to provide excellence in Christ-centered education as an extension of the Christian home.



## FACULTY

*Our highly educated and experienced staff cares deeply for our students' well-being, education, and spiritual growth!*

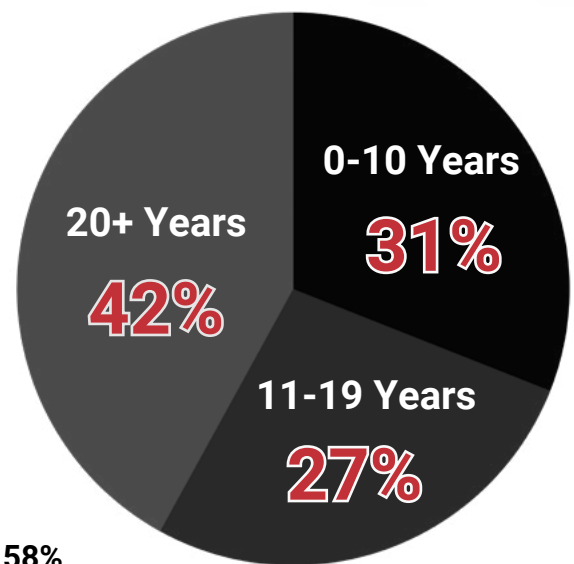


**Bachelor Degree: 100%**



**Advanced Degree: 58%**

## FACULTY EXPERIENCE AVERAGES



## TAPPS HONORS & RECOGNITIONS (2021-22)

### Henderson Cup Winner (Best Overall 3A Private School in Academics and Athletics)

- Girls Basketball District Champions
- Girls Golf State Champions
- Choir State Runner Up
- Girls Track State Champions
- TAPPS 3A Female Athlete of the Year
- First in State (Girls Athletics, Boys Athletics, Speech & Academics)
- TAPPS 3A Fine Arts Female Student of the Year
- 2X Henderson Cup Winner (Back 2 Back)
- Boys Golf State Champions

# HIGH SCHOOL CURRICULUM

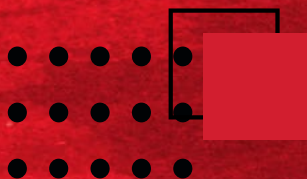
	Bible	English	Social Studies	Foreign Language	Math	Science
Freshman	Gospels	English I English I AP Prep	Human Geography AP World Geography World Geography H	ASL I Spanish I Spanish II H	Algebra I Geometry Geometry H	Biology Biology AP Prep
Sophomore	Old Testament	English II English II AP Prep	World History World History DC	ASL I, ASL II Spanish II Spanish III H	Algebra II H Geometry	Chemistry PAP Chemistry
Junior	Apologetics	English III Enlighs III DC	US History US History DC	ASL I ASL II ASL III Spanish III Spanish IV H	Algebra II College Algebra College Algebra DC Pre-Calculus Pre-Calculus H AP Calculus AB Statistics Statistics DC Trigonometry	Physics AP Physics *Astronomy *Astronomy H Biology Nutrition DC *Biology II DC *Anatomy H *AP Chemistry II
Senior	Purpose and Financial Principles	English IV English IV DC (British Lit) English IV DC (Technical Writing)	Government Government DC Economics Economics AP	ASL II ASL III ASL IV Spanish IV Spanish V AP	Algebra II College Algebra College Algebra DC Pre-Calculus H AP Calculus AB AP Calulus BC Statistics DC	Physics AP Physics *Astronomy *Astronomy H Biology Nutrition DC *Biology II DC *Anatomy H *AP Chemistry II AP Physics C
Athletics	Baseball; Basketball; Cheerleading; Cross Country; Football; Golf; Track & Field; Volleyball					
Electives	Accounting DC, Agriculture, Art AP, I, II, III, III(H), IV, IV(H); Art & Media Communications I, II, III, III(H), IV, IV(H); Band; Choir I, II, III, III(H), IV, IV(H); College Prep; Computer Science I, II, III, IV; Debate I, II, III, III(H), IV, IV(H); Drama I, II, III, III(H), IV, IV(H); Drumline, Psychology AP					

**\*Classes offered in alternative versions**

**30 TOTAL CREDITS REQUIRED FOR GRADUATION**

## STUDENT BODY

High School: 144  
Senior Class (2022): 34  
Average HS Class Size: 15



## ACCREDITATION

- **AdvancED (Cognia)**
- **ICAA (International Christian Accrediting Association)**
- **TEPSAC Member (Texas Private School Accreditation Commission)**

## AFFILIATIONS

- **ACSI (Association of Christian Schools International)**
- **HAIS (Houston Area Independent Schools)**
- **TAPPS (Texas Association of Private & Parochial Schools)**
- **CEEB (College Entrance Exam Board)**
- **NACCAP (North American Coalition for Christian Admissions Professionals)**

## GRADING SCALE

Grades are given on a 5 point scale with the exception of AP, Dual Credit (DC), and Honors courses. Due to the increased level of difficulty, students who score a 90 or above in AP/Dual Credit/Honors can earn up to 6 points.



GRADES	On-Level	AP/ DC / Honors
90-100	4.0 - 5.0	5.0 - 6.0
80-89	3.0 - 3.99	4.0 - 4.99
75-69	2.5 - 2.99	3.5 - 3.99
70-74	2.0 - 2.49	3.0 - 3.49
< 70	0.0	0.0



## SAT EXAM SCORES

YEAR	RCS Top 10%	RCS Top 50%	RCS Avg.	Texas Avg.	National Avg.
2021-2022	1412	1272	1145	1020	1068
2020-2021	1416	1278	1127	1003	1060
2019-2020	1423	1208	1102	1010	1051

## ON TO COLLEGE

The 2022 RCS graduating class attended twenty different colleges and universities.

This class has earned 1,208 hours of college credit which totals more than \$208,600 for state college and university tuition savings and almost \$796,880 for non-state colleges and universities.

This graduating class has been offered scholarships of approximately \$3.5 million in academics, athletics, and fine arts.





## ACCELERATED COURSES

Some courses are offered at an advanced level and are weighted accordingly as detailed in the grading scale section. The following courses are provided as either Advanced Placement or Dual Credit

### Advanced Placement

Calculus AB  
Calculus BC  
Chemistry  
Economics  
English III  
Physics I  
Physics C  
Spanish V

### Dual Credit

Biology 1322 (Nutrition)  
Biology 1406, 1407 (College Biology & Lab)  
English 1301, 1302 (Composition & Rhetoric)  
English 2311 (Technical Writing)  
English 2322, 2323 (British Literature)  
Government 2305 (American Government)  
History 1301, 1302 (US History)  
History 2321, 2322 (World History)  
Math 1314 (College Algebra)  
Math 1342 (Statistics)



## COLLEGE ACCEPTANCES

**Abilene Christian University**  
**Alfred University**  
**Auburn University**  
Barton College  
**Baylor University**  
**Belmont University**  
Berry College  
**Biola University**  
Birmingham Southern College  
Boston University  
Bryant University  
Christ for the Nations  
College of Wooster  
Colorado Christian University  
**Colorado School of Mines**  
Colorado State University  
Concordia University  
Creighton University  
**Dallas Baptist University**  
Drexel University  
**East Texas Baptist University**  
Emmaus Bible College  
Evangel University  
Florida Institute of Technology  
Florida State University  
**Georgia Tech**  
Grand Canyon University  
Gustavus Adolphus College  
Hendrix College  
**Houston Baptist University**  
Houston Culinary Arts School  
Howard Payne University  
Iowa State University  
**John Brown University**  
Johns Hopkins University

**Kansas State University**  
Kenyon College  
Lamar University  
LeTourneau University  
Liberty University  
Lipscomb University  
**Louisiana State University**  
**Louisiana Tech University**  
Loyola Marymount University  
McNeese State University  
Michigan State University  
Middle Tennessee State  
Midwestern State University  
Millsap College  
**Mississippi State University**  
Millsap College  
Mississippi State University  
North Carolina State University  
Northwestern State University  
Norwich University  
Ohio State University  
**Oklahoma Baptist University**  
Oklahoma City University  
Oklahoma Wesleyan University  
**Oral Roberts University**  
Ouachita Baptist University  
**Pennsylvania State**  
**Pennsylvania Christian College**  
Rensselaer Polytechnic Institute  
Rice University  
Robert Morris University  
Rose-Hulman Institute of  
Technology  
**Sam Houston State University**  
**Samford University**

Savannah College of Art & Design  
Schreiner University  
Southeast Missouri State  
Southern Methodist University  
Southwestern University  
St. Thomas University  
**Stephen F. Austin State University**  
**Texas A&M University**  
**Texas A&M University Galveston**  
**Texas Christian University**  
**Texas Lutheran University**  
**Texas Tech University**  
**Texas State University**  
**Texas Women's University**  
**The Citadel**  
**Trevecca Nazarene University**  
Trinity University  
**Tuskegee University**  
**US Merchant Marines Academy**  
**US Military Academy West Point**  
University of Alabama  
University of Alabama Birmingham  
**University of Arkansas**  
University of California  
University of Central Arkansas  
University of Dallas  
**University of Houston**  
**University of Iowa**  
**University of Louisiana at Lafayette**  
**University of Mary-Hardin Baylor**  
University of Michigan  
University of Minnesota  
University of Mississippi  
University of Missouri at St. Louis

University of New Mexico  
University of North Texas  
**University of Oklahoma**  
University of San Diego  
**University of St. Thomas**  
**University of Texas**  
Vanderbilt University  
Virginia Tech



Matriculation in **bold**

# ATHLETICS

Rosehill offers many different sport opportunities for students to gain skills, compete, be a part of a team, and learn great discipline. Our athletes foster school pride and leadership.



## FOOTBALL

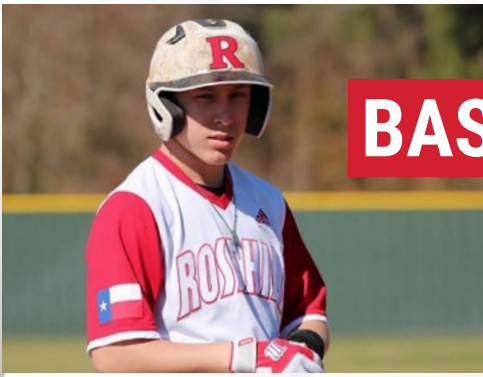


## VOLLEYBALL



## BASKETBALL





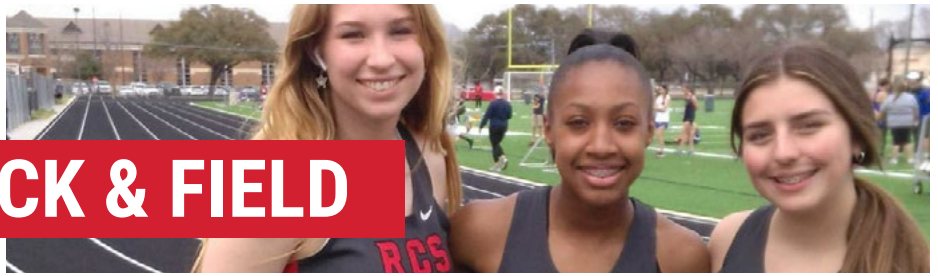
# BASEBALL



# CHEERLEADING



# TRACK & FIELD



# CROSS COUNTRY



# GOLF



# ORGANIZATIONS

At Rosehill, it is a priority to offer our students enriching, extracurricular experiences to grow their skills, discover passions, give back to the community, and exercise God-given talents. Our school offers an expansive list of opportunities for students to get involved, make an impact, and develop capabilities they will use for the rest of their lives.

## STUDENT COUNCIL

## 4-H BAND

## NATIONAL HONOR SOCIETY



## AMBASSADORS

## SPEECH

## PRAISE TEAM

## EAGLES JOINED FOR HOPE



## ONE ACT PLAY

# AND CLUBS

**EQUESTRIAN CLUB**

**TEXAS ASSOCIATION OF FUTURE EDUCATORS**

**AG SCIENCE/VSCP**



**CHOIR**

**DRAMA**

**DEBATE**

**ART**

**MATH OLYMPICS**

**R** ROSEHILL  
CHRISTIANSCHOOL

## 1

### ONLINE APPLICATION (PreK - 12)

- ☐ Complete the online application agreeing to the following: Statement of Faith & Morality Statement
- ☐ Payment of \$275 application fee

### SUBMIT REQUIRED DOCUMENTS (PreK - 12)

- ☐ Pastor Questionnaire
- ☐ Teacher recommendations (K - 12)
  - Elementary: math teacher & language arts teacher
  - Middle School / High School: one each from a math AND English/language arts teacher PLUS one from teacher of your choice
- ☐ Previous Testing (K - 12)
  - Any previous testing standardized testing and psychological testing
  - Any previous PLAN, PSAT, ACT, or SAT scores, ISEE scores
- ☐ Report cards from previous two years
- ☐ Grade report showing present student performance (K-12)
- ☐ Birth certificate
- ☐ Immunization records

## 2



## 3

### TESTING

Testing will occur once the application has been submitted. In some cases, high school admission can be determined based on PSAT or SAT scores, and admissions testing can be waived.

GRADE	TESTING	COST
K-2	Kaufman Assessment Battery for Children II (KABC-II)	\$225
3-6	Woodcock-Johnson Test of Cognitive Abilities IV (WJ IV-COG)	\$225
7-12	Woodcock-Johnson Test of Cognitive Abilities IV (WJ IV-COG)	\$225

# 4

## FAMILY INTERVIEW (PreK - 12)

Once the application file is complete and indicates the student might be a fit for our school, an interview with the family will be scheduled with the grade level principal.

It is appropriate for both parents to attend the interview. However, at least one parent and the child should be present.

If the application file indicates that the school would not be a fit for the student, the principal will notify the parents.

## ADMISSIONS COMMITTEE REVIEW (PreK - 12)

Upon final submission of all documents, testing, and the family interview, the Admissions Committee will meet to review the student file and determine admission to Rosehill Christian School.

The determination of the Admissions Committee will be formally communicated to the family.

## NOTES

Students who have learning differences or are presently receiving assistance through Special Education or 504 should provide all previous testing, ARD paperwork, 504 paperwork, and a list of accommodations received. A pre-interview will be conducted before any new admissions testing to determine if RCS is staffed to meet the educational needs of the child requesting admission.

Any student who has been expelled, assigned to alternative education, or who is presently suspended will not be eligible for enrollment at RCS.

# 5



## TUITION INSURANCE

RCS provides optional tuition insurance through Hanover Insurance Group. If selected, this insurance helps protect your investment in your child's education. Your enrollment contract with the school financially obligates you to pay the full amount of tuition and fees for your child regardless of attendance. For a covered cause of loss, tuition insurance will pay the remaining portion of tuition up to the co-insurance percentage listed on the policy.

Please contact Kendra Bissell (kbissell@rcseagles.org) for additional information.

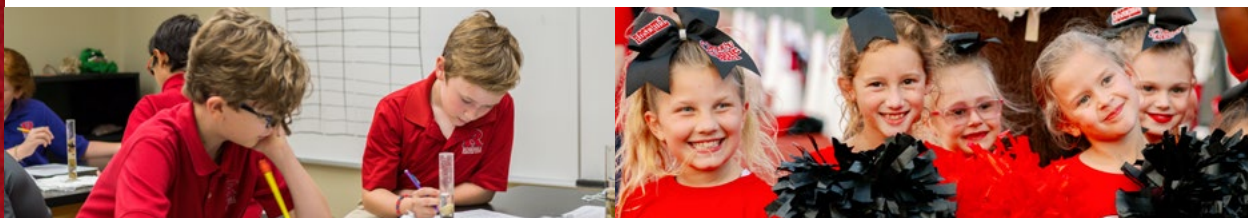
## TUITION DISCOUNTS

*Ministry Discount:* RCS is pleased to offer a 50% tuition reduction for full-time qualifying ministers desiring to enroll their K-12 child(ren). This benefit is also extended to full-time employees of Boys & Girls Country in Tomball, Texas. Please refer to our website for additional details.

*Multi-Family Discount:* 5% applied to each student within a family after one at full tuition rate.

## PAYMENTS

Tuition payments are processed through the third-party organization FACTS. During the enrollment period, each family will set up their preferences relative to methods and timing of payments.



## 2023 - 2024 TUITION

### Lil' Eagles

- 2 days/week - \$6,100
- 3 days/week - \$7,200
- 5 days/week - \$8,200

### PreK - 3

- 2 days/week - \$6,500
- 3 days/week - \$8,100
- 5 days/week - \$9,600

### PreK - 4

- 3 days/week - \$8,500
- 5 days/week - \$10,000

### Bridge

• \$11,400

### K - 5th Grade

• \$14,700

### 6th - 7th Grade

• \$16,000

### 8th Grade

• \$16,200

### 9th - 12th Grade

• \$19,250

## FEES

New Student Application Fee	<b>\$275</b>
New Student Admissions Testing	<b>\$225</b>





## INCLUDED IN TUITION

### ***K - 12th Grade***

- Field Trip
- Morning Care (7 am)

### ***5th - 12th Grade***

- Overnight Trip

## AFTERNOON SUPERVISION

***PreK - 5th Grade:*** \$13/Afternoon

### ***6th - 12th Grade***

Students are required to check in to extended care. Late fees apply for all grades/ages.

## PARENT PROVIDED

### ***6th - 12th Grade***

- One computer per student is required (see website)
- TI-84 graphing calculator is required (Algebra I and above)
- Athletic Fees

## LUNCH PROGRAM

### ***PreK - 12th Grade***

Optional hot lunches are available for approximately \$6



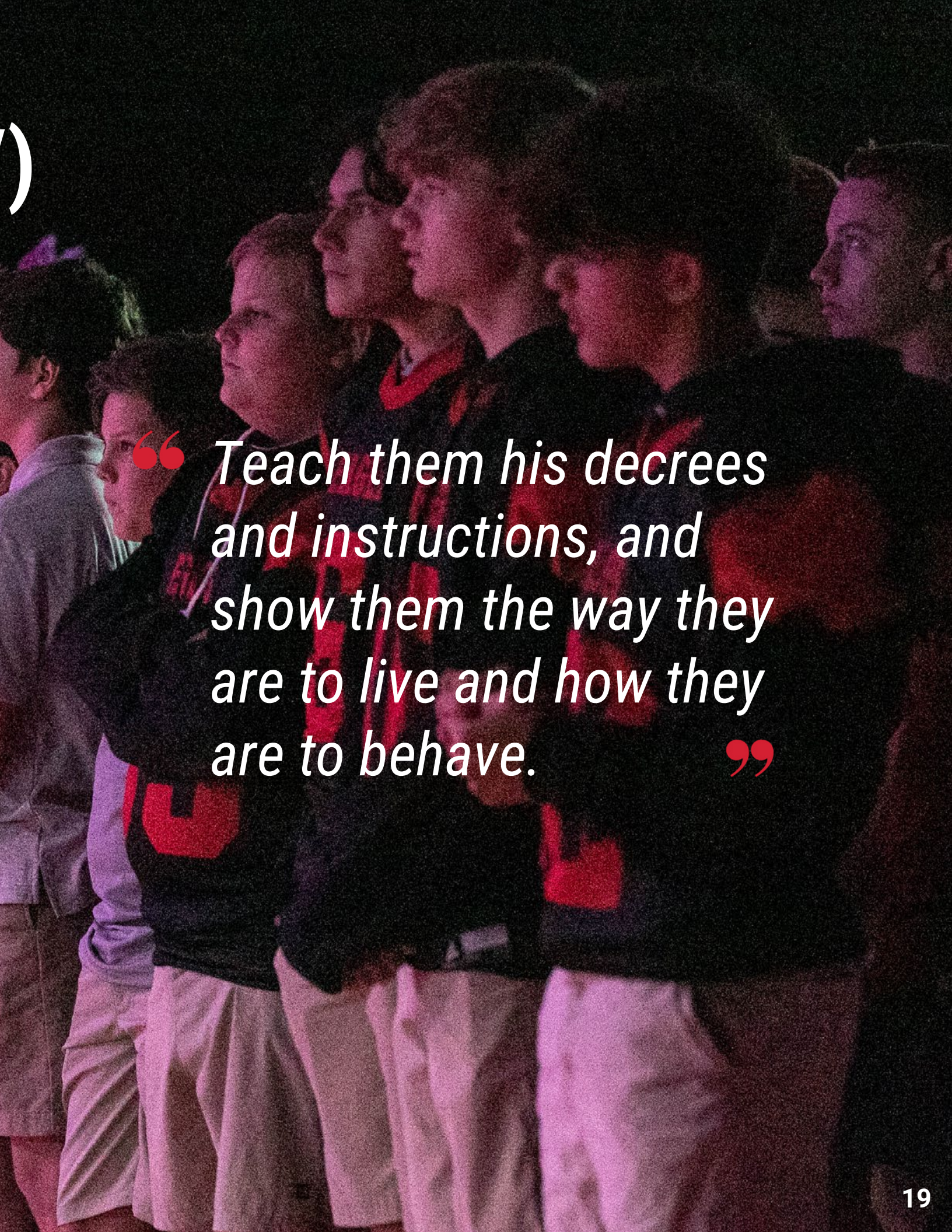
## FINANCIAL SUPPORT

RCS depends on donations and fundraising activities to further the school's mission. A generous tax-deductible donation to the General Fund helps ensure educational excellence for our children. Active participation is requested from each family.



# PROVERBS 9:9 (ESV)





*“ Teach them his decrees  
and instructions, and  
show them the way they  
are to live and how they  
are to behave. ”*

**TAPPS**



**ACSI**  
ACCREDITED



**R** ROSEHILL  
CHRISTIAN SCHOOL

(281) 351-8114 | [www.rosehillchristian.org](http://www.rosehillchristian.org)  
19830 Farm to Market 2920 | Tomball, TX 77377